



MONTHLY MEMBERSHIP PROGRESS REPORT

District A 3

Results as of: 05/31/2019

GMT: CHRIS LEWIS

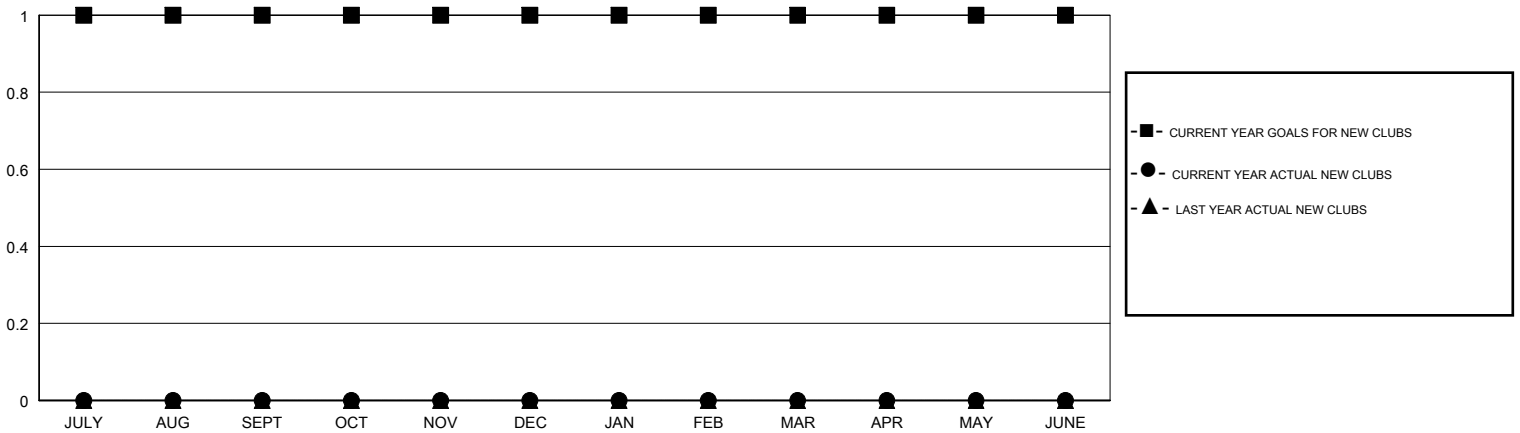
LOCATION ONTARIO

GMT CA

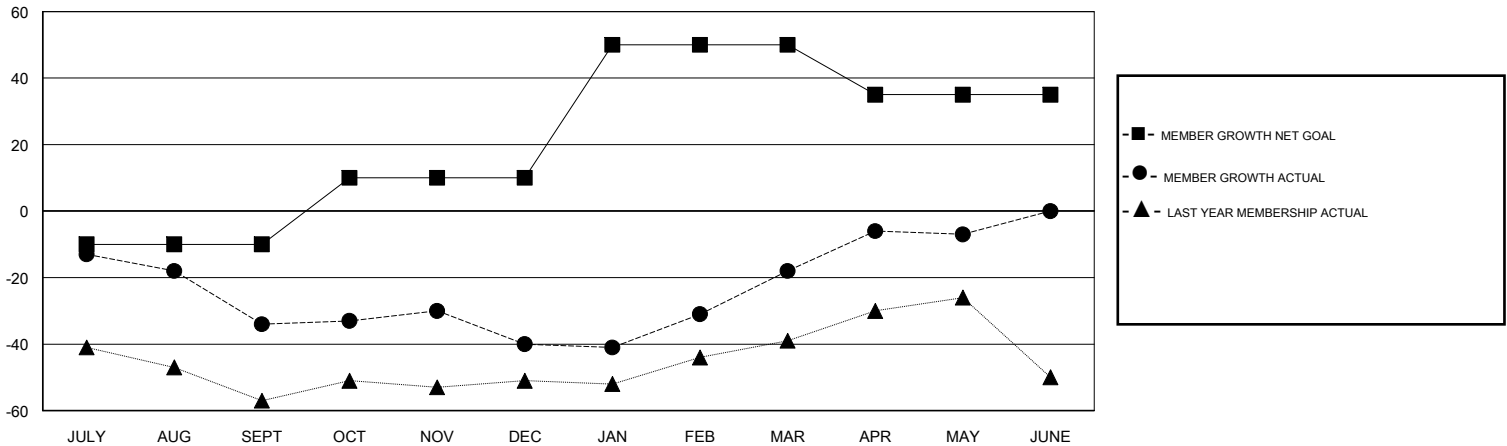
Clubs			
RESULTS FOR 2018-2019			
QUARTER	NEW CLUB GOAL	NEW CLUBS	DROPPED CLUBS
JULY/AUG/SEPT	1	0	0
OCT/NOV/DEC	0	0	0
JAN/FEB/MAR	0	0	0
APR/MAY/JUNE	0	0	0

Members			
RESULTS FOR 2018-2019			
QUARTER	MEMBER GROWTH NET GOAL	MEMBER GROWTH ACTUAL	DROPPED MEMBERS ACTUAL (including transfers)
JULY/AUG/SEPT	-10	14	42
OCT/NOV/DEC	20	49	49
JAN/FEB/MAR	40	51	23
APR/MAY/JUNE	-15	27	13

GOALS AND ACTUAL NEW CLUBS CUMULATIVE



GOALS AND ACTUAL MEMBERS CUMULATIVE



DROPPED CLUBS: 0	34 CLUBS OF 50 ADDED 1 OR MORE NEW MEMBERS	<u>GENDER DISTRIBUTION</u>	
DROPPED MEMBERS		MALE 787 (60.40%)	FEMALE 516 (39.60%)
DECEASED 20	CLICK HERE FOR CUMULATIVE MEMBERSHIP DATA	Women Percentage Fiscal Year Goal: 4%	
CLUB CANCELLED 0		TOTAL FAMILY UNIT MEMBERS 345	
OTHER 107		FAMILY MEMBERS PAYING HALF DUES 179	
TOTAL 127			